



# Smart Hub +

Smarter, Faster, Better

24/7 Protection Against Any Threat

# Smart Threat Detection.

## What is Smart Hub +?

Built on Ajax technology and specifically designed to safeguard properties and assets, the Smart Hub + is the UK's most advanced, configurable internal temporary alarm system.

## Features & Benefits of Smart Hub +:

### Impact & Tamper Proof



Robust, tamper proof casing means the Smart Hub + meets the requirements of the SSAIB Code of Practice (TAS) and the standards required by major insurers.

### Adaptable & Scalable



The Smart Hub + modular system can be configured to mitigate a wide variety of risks to property and sites, including fire, flood and break-ins.

### 24/7 live Monitoring









The Smart Hub + is monitored by our own VPS in-house monitoring station, the VPS Alarm Receiving Centre. This ensures accurate verification and rapid response.

### Rapid installation

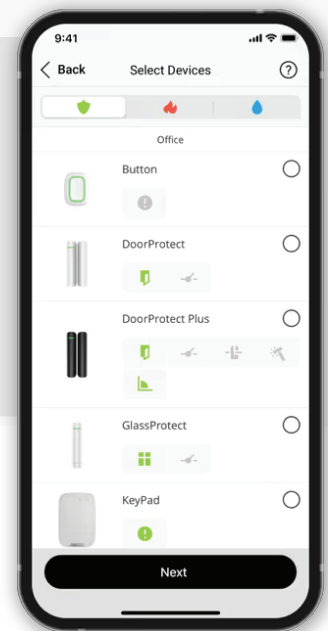


Rapid, same day installation ensures our customers have immediate risk mitigation, as well as piece of mind.



 <b>Life Quality</b>	 <b>Street Siren</b>	 <b>MotionCam &amp; IndoorCam</b>
 <b>Leaks Protect</b>	 <b>Door Protect +</b>	 <b>Fire Protect 2</b>

### Control via KeyPad or App



## What does Smart Hub do?

Smart Hub utilises the latest security technology to guard any property 24/7, against any threat, including:



## How does it work?

Smart Hub connects up to 100 devices into a secure matrix which identifies and automatically mitigates many of the threats your property may face.

## How is it controlled?

The Smart Hub system puts peace of mind into the palm of your hand as it allows you to control the whole matrix of devices from a secure smartphone app.

Furthermore, your Smart Hub system is actively monitored 24/7 by VPS's state-of-the-art Monitoring Centre, to ensure a rapid and professional response to any threats your property faces.

## KeyPad

Control access via the included keypad



Easily set-up and edit codes remotely for easy management



Tamper and alarm jamming protection



KeyPad supports more than 50 unique user access codes. Create, allocate and remove codes remotely.



## MobileApp (optional)

The app can be configured as an optional add-on



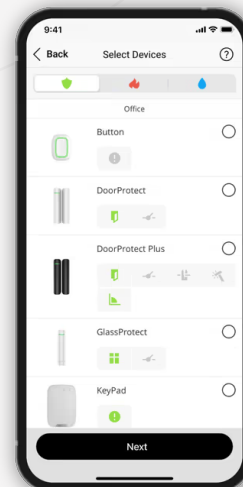
Instantly receive notifications about incidents at your facility



Receive reminders to turn Smart Hub on and off



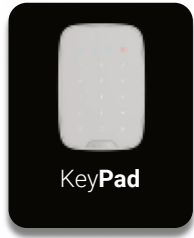
View detailed information about the status of detectors at your facility



# Smart Hub + Features



Fire  
Protect 2



KeyPad



Door  
Protect +



Motion  
Cam (PhOD)



Outdoor  
Cam



Leaks  
Protect



Remotely control up to 100  
linked devices



Arm, disarm, view and configure  
devices via app



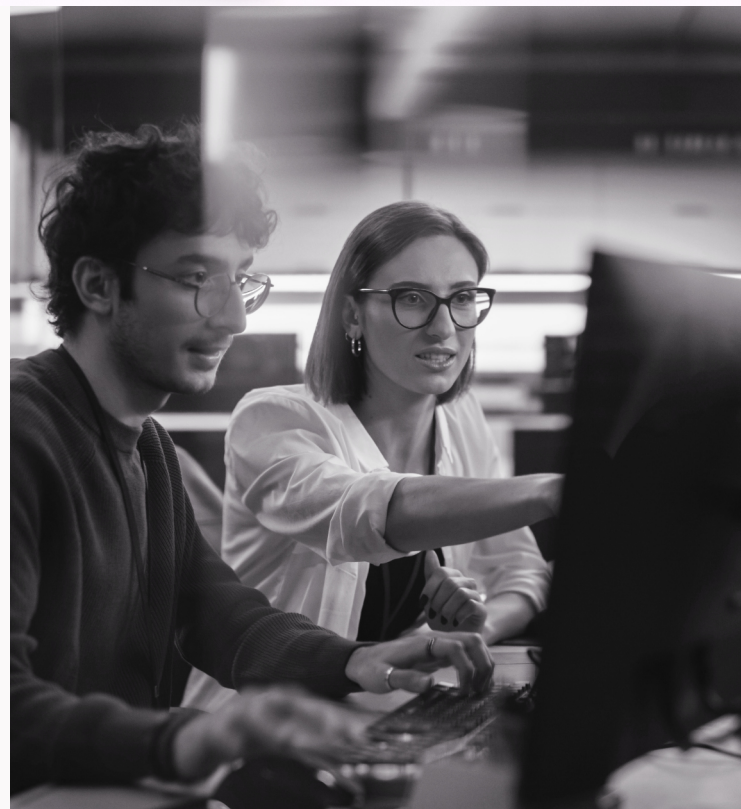
Automatically linked to VPS Alarm  
Receiving Centre for verification and  
rapid response



Shock, tilt and tamper protection



Uninterrupted battery power for 6 months  
Conforms to EN50131 Grade 2 and  
Temporary Alarm System (TAS)  
Code of Practice 2004



# Smart Hub + Add-ons



## LifeQuality

- | Smart air quality monitor
- | Includes Carbon Dioxide, Temperature and Humidity sensors
- | Medical-grade measurement accuracy
- | Full remote control and configuration via app



## FireProtect 2

- | Wireless heat, smoke & CO detector with 85dB sounder
- | Dual-spectrum sensor distinguishes smoke from steam
- | Remote configuration and control
- | 7 & 10 year battery capability



## WaterStop

- | Remote controlled water shutoff valve
- | Combined with LeaksProtect, Water Stop automatically shuts off water supply in 5 seconds
- | Suitable for properties with unstable or no power supply



## LeaksProtect

- | Wireless leak detector
- | Detects small leaks and big floods
- | Alerts show location of the activated detector
- | IP65 Housing, 5 year battery life



## StreetSiren

- | Wireless siren with LED frame and piezoelectric buzzer
- | Designed for outdoor and indoor installation
- | 85 to 113 dB for 3 seconds to 3 minutes
- | Tamper & jamming detection



## DoorProtect +

- | Wireless opening detector for windows & doors
- | Registers change in vertical slope angle, bangs & vibration
- | Jamming detection & encrypted communications
- | 5 year battery life



## MotionCam (Photos On Demand)

- | Wireless motion detector taking photos by alarm and on demand
- | Smart Detect - Software filter for false alarms
- | Remote configuration and control
- | Take HDR photos on demand via app, day or night



## OutdoorCam (Photos On Demand)

- | HDR technology for clear photos in any conditions
- | IR backlight for taking photos in the dark
- | 3-15 metre detection zone
- | 3 year battery life